

# Panel 1

## Sicherheitsrisiko Klimawandel

Prof. Dr. Peter Hoeppe  
Geo Risks Research/Corporate Climate Centre  
Munich Reinsurance Company

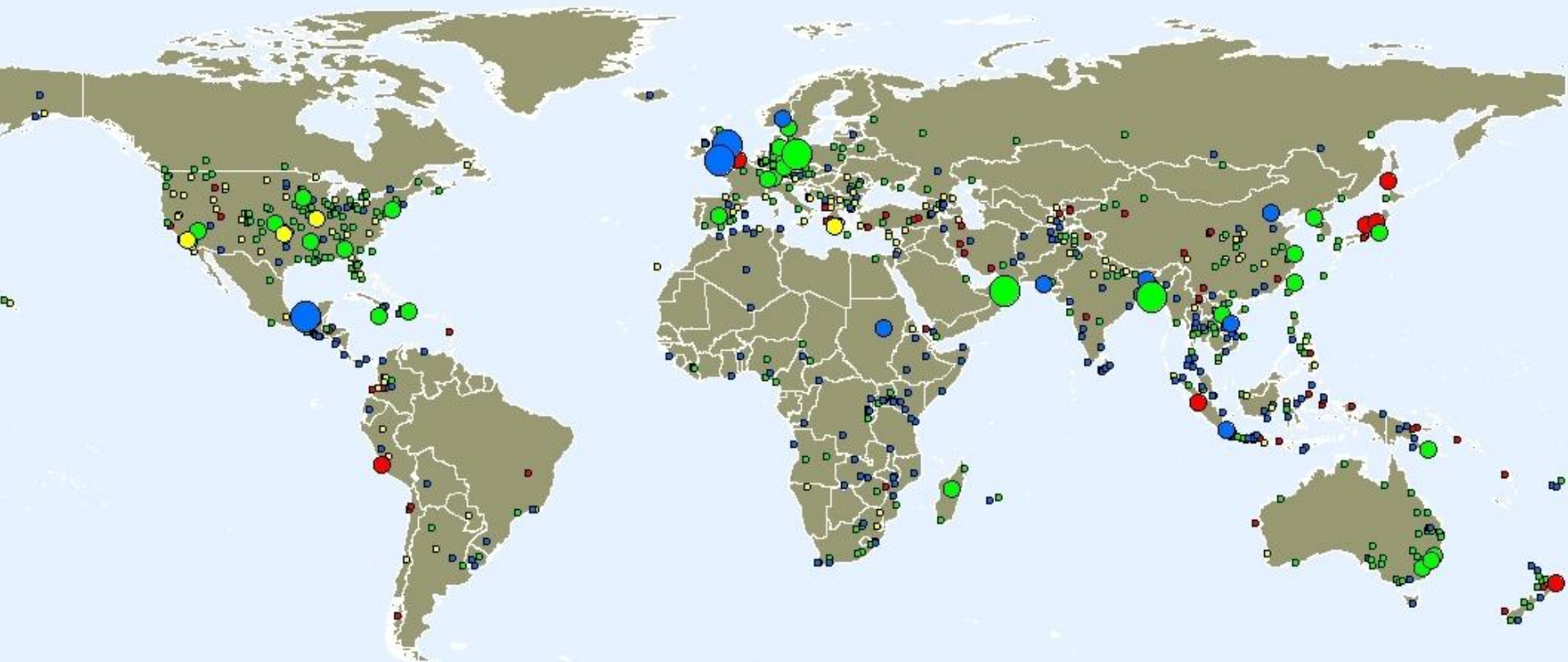
6. November 2008, Freiburg



Münchener Rück  
Munich Re Group



# Munich Re NatCatSERVICE: 960 natural disasters 2007

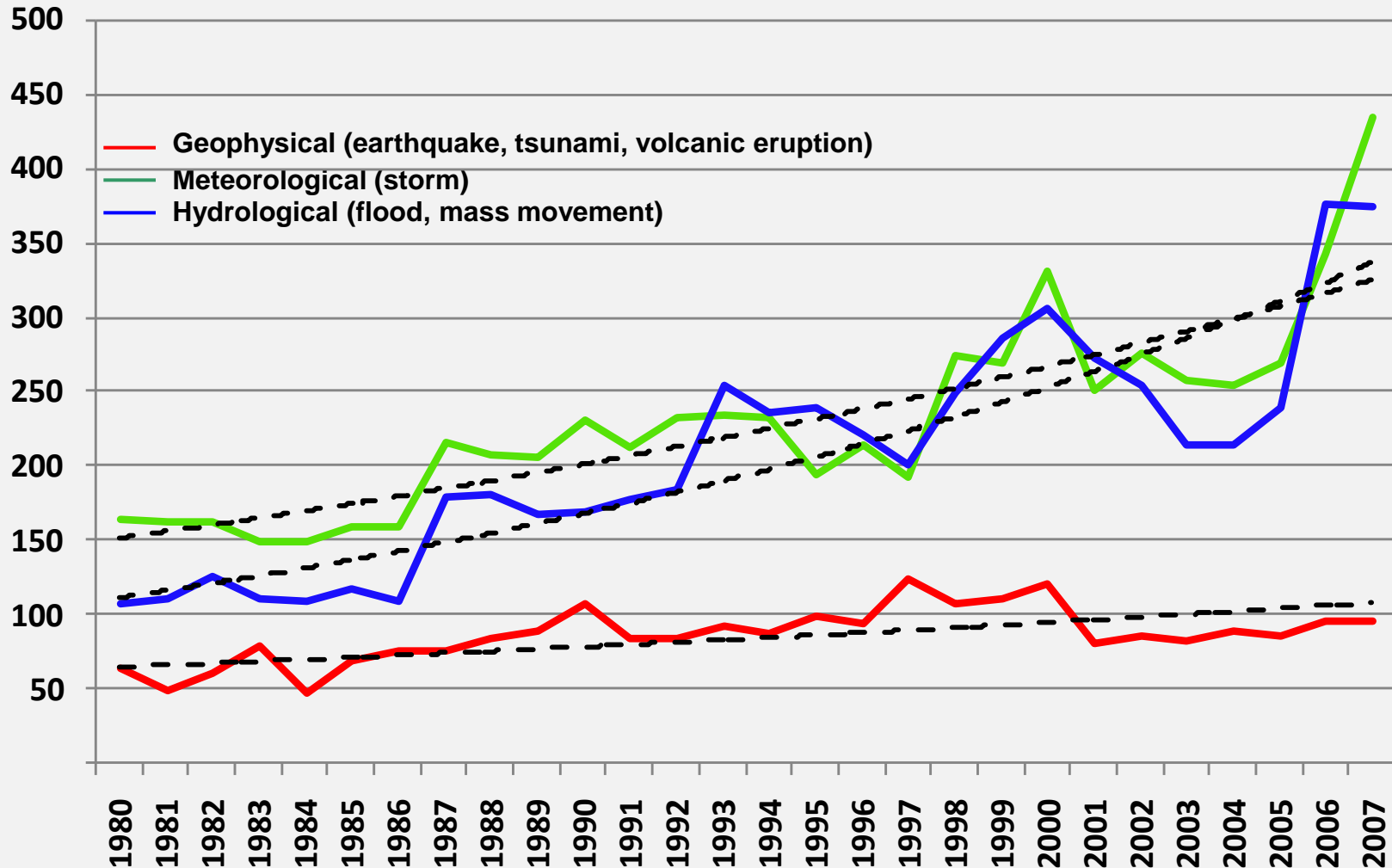


960 events

- Geophysical (earthquake, tsunami, volcanic activity)
- Meteorological (storm)
- Hydrological (flood, mass movement)
- Climatological (extreme temperature, drought, wildfire)

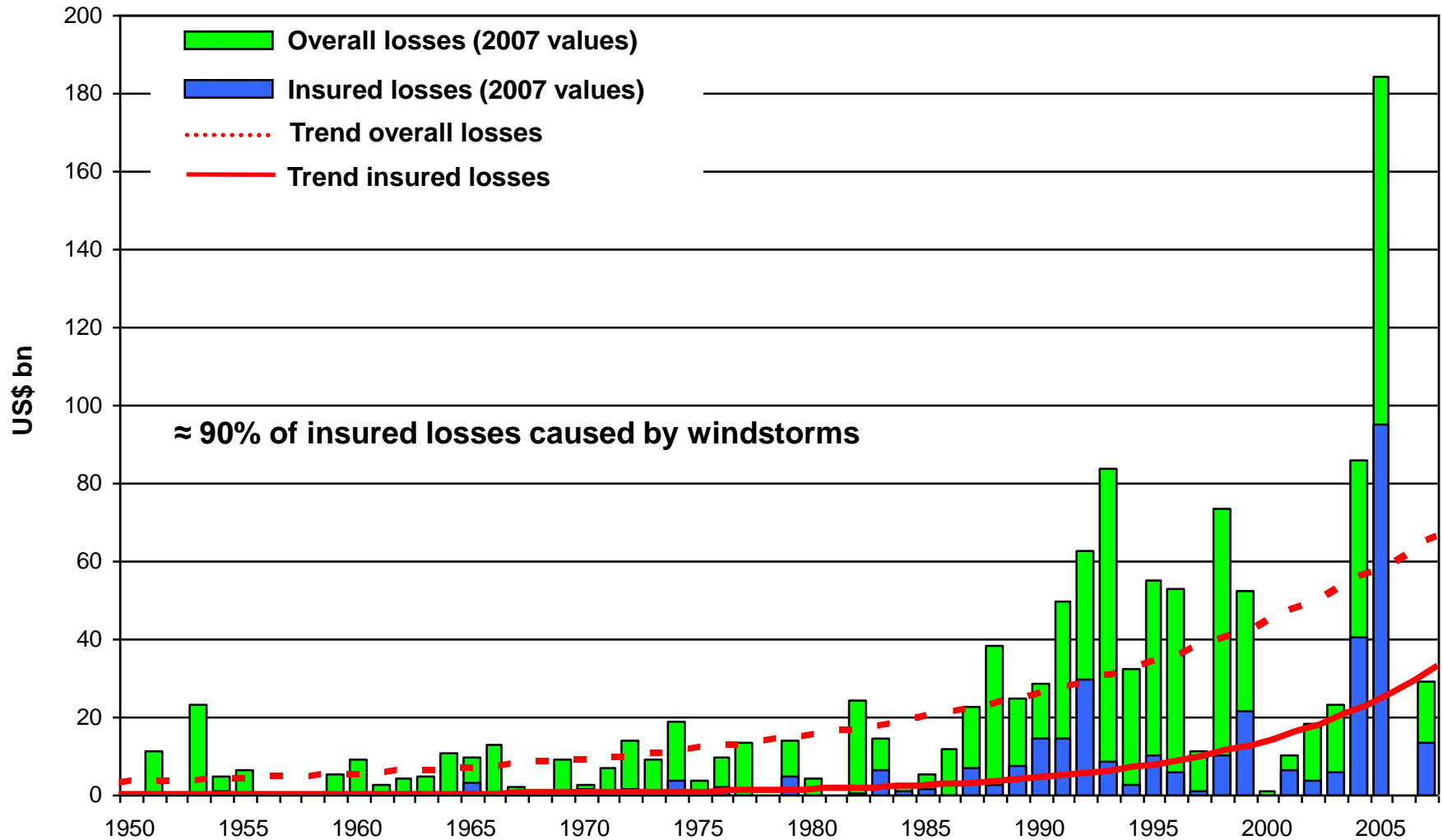
# Worldwide natural catastrophes 1980 – 2007

## Number of events

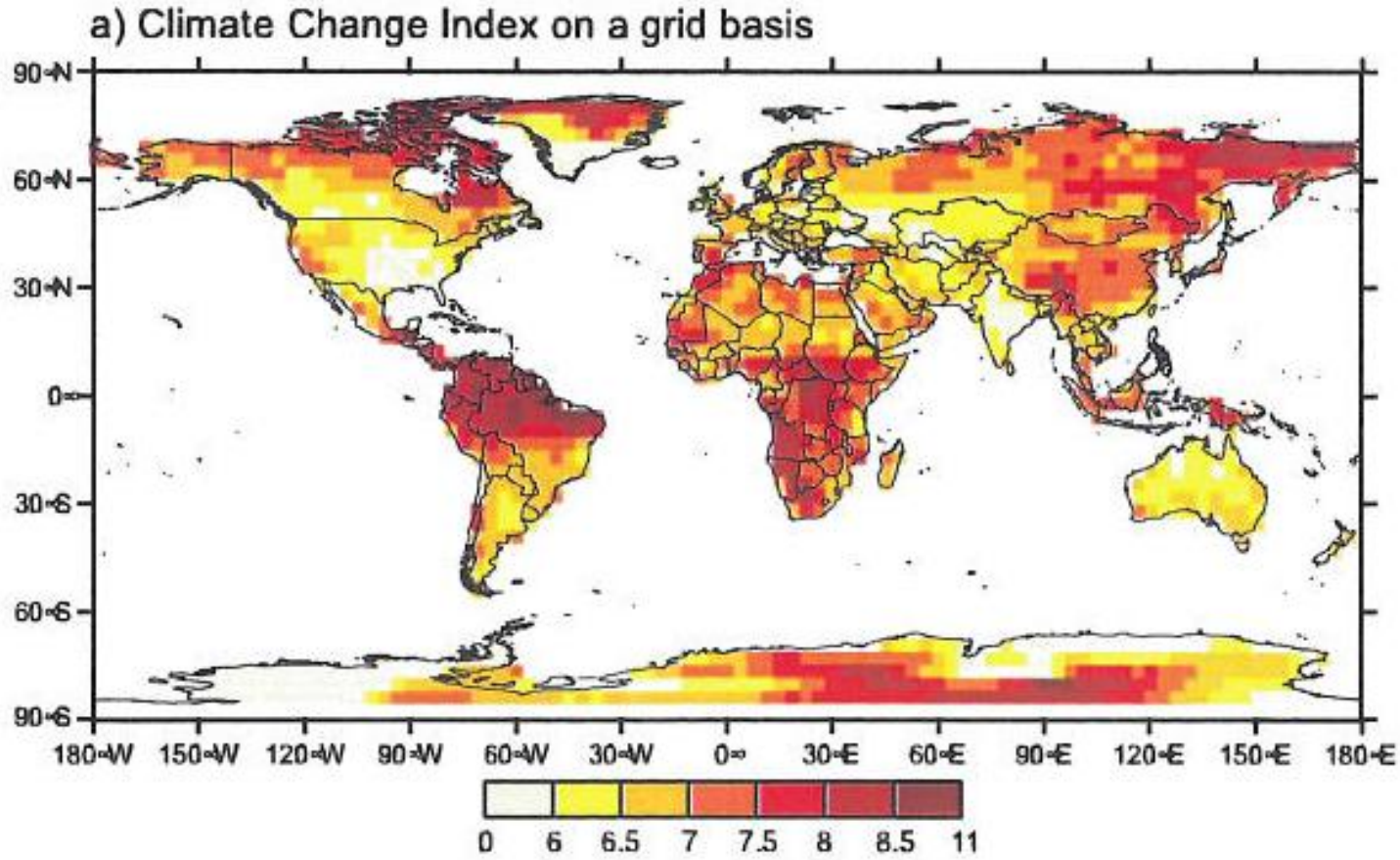


# Great Weather Disasters 1950 – 2007

## Overall and insured losses



# Climate Change Index



Source: Baettig et al., 2007, Climate Change Index: where climate change may be most prominent in the 21st century

# Adaptation to Increasing Weather Extremes in Developing Countries

## Munich Climate Insurance Initiative (MCII)



**The MCII was founded in 2005** by representatives of Munich Re, Munich Re Foundation, World Bank, Germanwatch, IIASA, Potsdam Institute for Climate Impact Research (PIK), Tyndall Centre, and independent experts.

### **Objectives:**

Develop insurance-related solutions to help manage the impacts of climate change in developing countries.

### **Recent activities:**

MCII-Submission to UNFCCC with concrete suggestions of insurance tools to be implemented in a Post-Kyoto-Protocol. Suggestions will be discussed by delegates at the Climate Summit in Poznan.

#### Munich Climate Insurance Initiative

#### Mission statement

